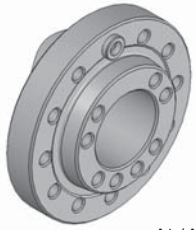
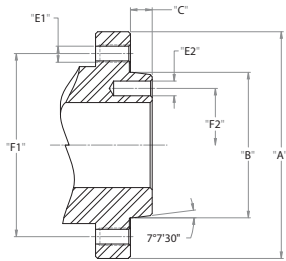


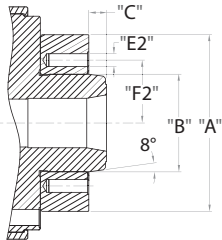
Spindle Identification for Mounting Plates



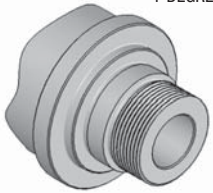
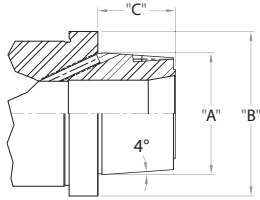
A1 / A2



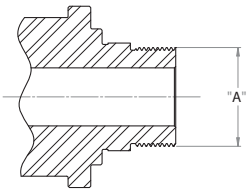
5C COLLET-READY



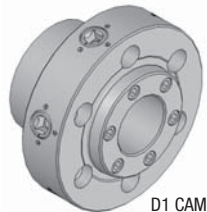
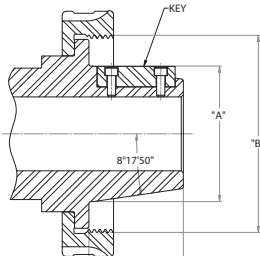
HARDINGE
4-DEGREE



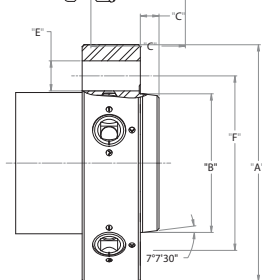
THREADED



LONG TAPER



D1 CAMLOCK



SPINDLE TYPE A1 & A2

Spindle nose	A	B	C (MAX)	E1 & E2	F1	F2
A-4	4 1/4"	2.500	0.437	7/16"-14	3.250	-----
A-5	5 1/4"	3.251	0.563	7/16"-14	4.125	2.437
A-6	6 1/2"	4.188	0.625	1/2"-13	5.250	3.250
A-8	8 1/4"	5.501	0.688	5/8"-11	6.750	4.375
A-11	11"	7.751	0.750	3/4"-10	9.250	6.500
A-15	15"	11.251	0.813	7/8"-9	13.000	9.750
A-20	20 1/2"	16.251	0.875	1"-8	18.250	14.500
A-28	28 1/2"	23.001	1.000	1-1/4"-7	25.500	10.438

5C COLLET-READY

Spindle nose	A	B	C (MAX)	E2	F2
A-4	4.560"	2.500	0.460	M10-1.5x.75	1.625
A-5	5.500"	3.251	0.500	M10-1.5x.76	2.0625
A-5	—	3.251	0.500	M10-1.5x.75	2.0625
A-6	—	4.192	0.562	M12-1.75x.88	2.6250

HARDINGE 4 DEGREE SPINDLE

Spindle nose	A	B	C (MAX)
4-Degree	2.316	3.126	1.472

THREADED SPINDLE TYPE

Spindle nose thread
A
1"-8
1"-10
1 1/2"-8
1 3/4"-8
2 1/4"-8
2 3/8"-6
2 3/4"-8
2 3/16"-10

L SPINDLE TYPE LONG TAPER KEY DRIVE

Spindle nose	A	Thread B	C	KEY
L00	3 1/2"	3-3/4"-6	2.000	3/8 x 3/8 x 1-1/2
L0	4 1/8"	4-1/2"-6	2.375	3/8 x 3/8 x 1-3/4
L1	5 3/4"	6"-6	2.875	5/8 x 5/8 x 2-3/8
L2	7 3/8"	7-3/4"-5	3.375	3/4 x 3/4 x 2-7/8
L3	10"	10-3/8"-4	3.875	1.00 x 1.00 x 3-1/4

D1 CAMLOCK SPINDLE TYPE

Spindle nose	A	B	C (MAX)	CAMSTUD DIA "E"	F
D1-3	3 5/8"	2.125	0.437	9/16	2.782
D1-4	4 1/4"	2.500	0.437	5/8	3.250
D1-5	5 3/4"	3.251	0.500	3/4	4.125
D1-6	7 1/8"	4.188	0.625	7/8	5.250
D1-8	8 7/8"	5.501	0.688	1	6.750
D1-11	11 3/4"	7.751	0.750	1-3/16	9.250
D1-15	15 7/8"	11.251	0.813	1-3/8	13.000