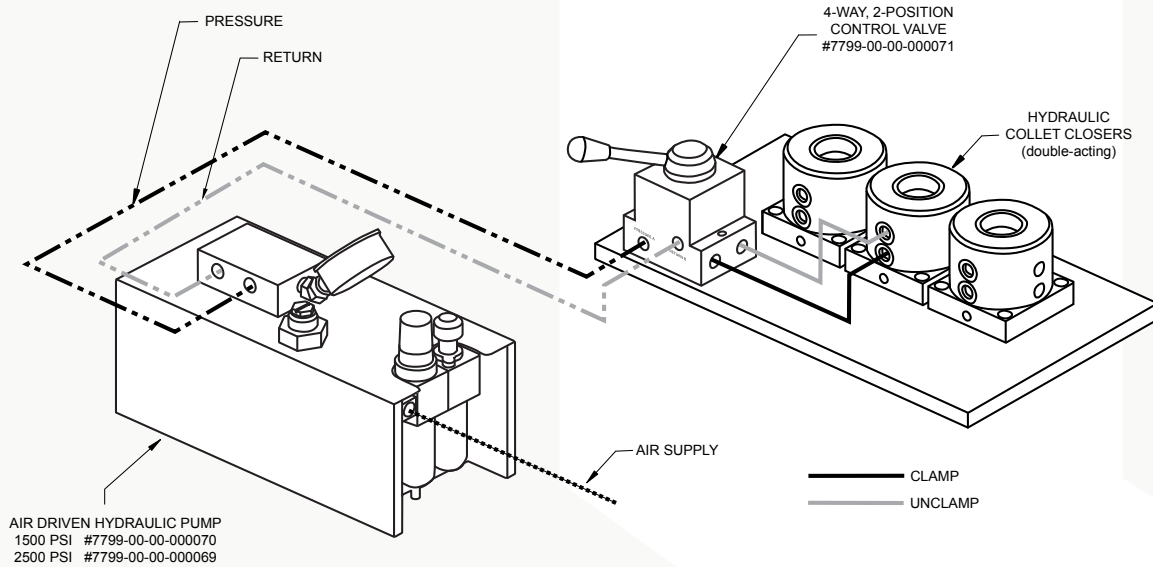


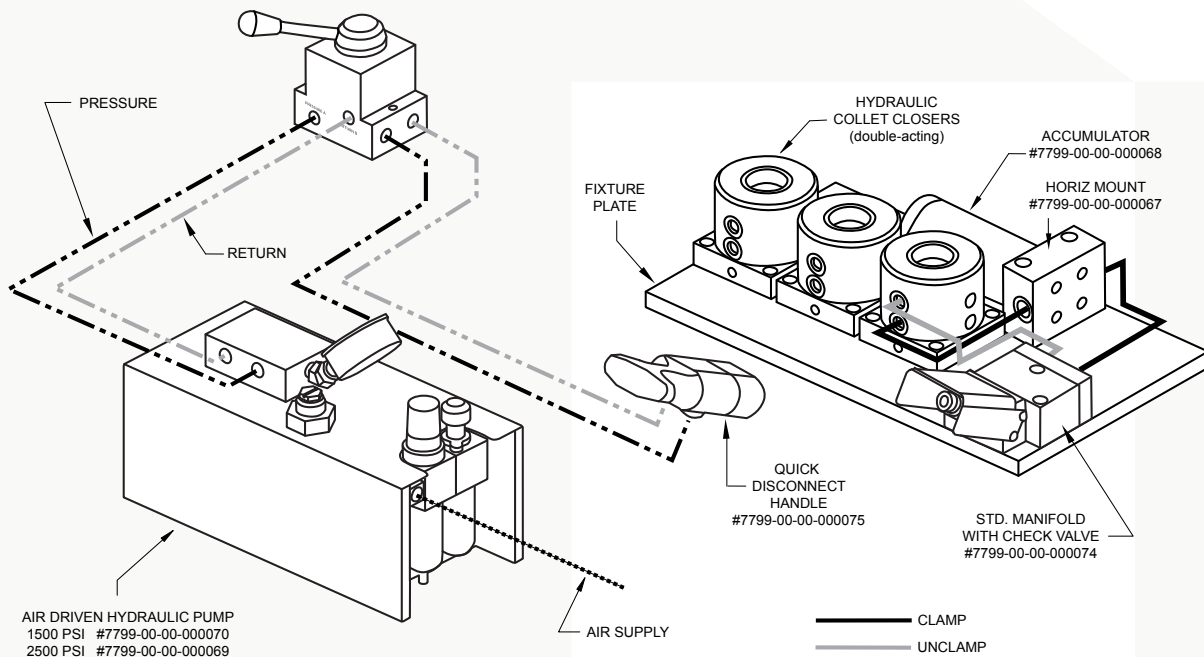
# Sample Hardinge Hydraulic Collet Block Configurations



## Example of a typical hydraulic configuration

Components include a pump, control valve and three hydraulic collet blocks supplied by Hardinge mounted on a customer machined fixture plate. (schematic shown in clamp position)

Dimensions for mounting holes are available on the installation instructions online at [www.hardingetooling.com](http://www.hardingetooling.com)



## Example of a quick disconnect hydraulic configuration

Components include a pump, control valve, accumulator, quick disconnect handle, manifold with check valve and three hydraulic collet blocks supplied by Hardinge on a customer machined fixture plate. The control valve should mount outside of the machine with the pump or on the outside wall of the machine. The quick disconnect with check valve allows you to remove the hydraulics while in the clamp mode – ideal for preloading pallets. An accumulator is required when using the quick disconnect product. (Schematic shown in the clamp position)

Dimensions for mounting holes are available on the installation instructions online at [www.hardingetooling.com](http://www.hardingetooling.com)